

Celebrate Earth Day by
touring area small farms!



13TH ANNUAL

PIEDMONT
Farm Tour

SATURDAY & SUNDAY

April 19 & 20

2008

1:00 pm - 6:00 pm



35 FARMS \$30

5 NEW FARMS!



The Carolina Farm Stewardship Association: Connecting Communities with their Farmers

for over 25 years, the Carolina Farm Stewardship Association (CFSA) has been organizing, educating and inspiring farmers and consumers to build a better food system.

You can search for local food on our new website, www.carolinafarmstewards.org, the most complete guide to sustainable farms in the Carolinas and the businesses that support them. Whether you're looking for chemical-free U-pick berries, or eggs from free-ranging hens, or restaurants featuring farmers market vegetables, www.carolinafarmstewards.org is your one-stop resource for connecting with your food community.

CFSA is a membership-based organization of more than 1,000 farmers, gardeners, businesses, and individuals in North and South Carolina who are committed to creating a food and farming system that is:

- Good for you and your family**
- Good for farmers and our communities**
- Good for the environment**

There are many ways to join CFSA in 2008 and learn more about sustainable farming methods and local food!

Piedmont Farm Tour — April 19 & 20

Upstate South Carolina Farm Tour — May 31 & June 1

High Country Farm Tour — August 2 & 3

Eastern Triangle Farm Tour — September 20 & 21

23rd Annual Sustainable Agriculture Conference,
Anderson, SC — October 31 - November 2

We are building stronger connections between consumers and their sustainable farmers. You can find much more information about us, and find your community's farms online at www.carolinafarmstewards.org

We hope you are inspired and educated by this tour and that you will join and support CFSA in our efforts to create a sustainable future. Enjoy the tour!

The Goal of this Farm Tour...

is to help connect you and your family with where your food comes from, who is growing it, and how it is being grown. Too often, when you ask children where food comes from, they say the grocery store. Only two generations ago, most people grew up on farms and took part in food harvests on a regular basis. It's time to reestablish the connection between consumers and farming before it's completely lost. Local and organic food systems are critical to preserving our natural environment and resources and to achieving socio-economic sustainability. We all, from farmer to consumer, play a role in creating a sustainable future for generations to come.

What is sustainable agriculture?

In a nutshell, it is a food and fiber production and distribution system that is environmentally sound, economically viable, and socially just. This means that our food and fiber come from local farms that use production practices that work in harmony with Mother Nature, not against Her. Our food is fresher and more nutritious; our water, air, and soil are cleaner; and farmers and farm workers make a decent living from their work without daily exposure to harmful chemicals. CFSA has been working successfully for 25 years to make this vision a reality. Join today, and help us make even greater strides in the next 25 years.

JOIN CFSA NOW!

YES! I want to help build the local and organic movement in the Carolinas.

- Introductory (first year) (\$25)
- Limited income/student (\$20)
- Individual/family/farm (\$39)
- Supporting (\$100)
- Business/organization (\$50 introductory, other levels based on income)
- Go to our website, www.carolinafarmstewards.org
- Call us at (919) 542-2402
- Sign up at the Farm Tour Kick-off or on the Farm Tour

We hope you will join us in continuing to build a sustainable future for farmers, consumers and the natural resources on which we all rely.

To Take The Tour:

Gather up your friends, fill up a car, locate each farm on the maps inside and decide which route you want to take!

Pick and choose whichever farms you want to visit!

Your tax-deductible donation is requested. All proceeds will benefit CFSA.

\$30* per car for all 35 farms

*each receives a SUPPORT LOCAL FARMS button

or \$10 per car per farm

Button for entire tour is \$25 in advance. See next page for locations.

OR... VOLUNTEER and attend the Farm Tour for FREE!

For more info, contact: volunteer@carolinafarmstewards.org or (919) 542-2402

Questions? Call the CFSA at 542-2402

CO-SPONSORED BY:



Where to Get Your Button for All 35 Farms:

At the first farm you visit for \$30, OR in advance for \$25 at the following locations:

CARRBORO:

Weaver Street Market
Fifth Season Gardening Co.
Maple View Ice Cream Store

CHAPEL HILL:

Weaver Street Market
(Southern Village location)

Niche Gardens

DURHAM:

Duke Farmer's Market
Durham Co-op Grocery
SEEDS BOOTH at the
Durham Farmers' Market

GRAHAM:

Benjamin Vineyards & Winery

SILER CITY:

Celebrity Dairy

PITTSBORO:

General Store Café
PERRY-WINKLE FARM BOOTH at the
Fearington Farmers' Market
Chatham Marketplace

RALEIGH:

Harmony Farms
Triangle Nutrition
Moore Square Farmers' Market

HILLSBOROUGH:

Orange Cty. Farmer's Market
at the PUBLIC MARKET HOUSE
Maple View Country Store

TIPS for taking the TOUR

Many folks comment that there just isn't time to visit all of the farms that they want to see. We have organized the tour in a way that will hopefully make your experience as fruitful as possible.

Here are some helpful hints:

Bring a cooler! . . . You'll be able to buy produce, eggs, cheese, meat, and other farm products at many of the farms.

Start with the understanding that you will only be able to visit 3 to 4 farms a day . . . By the time you factor in driving and actually touring the farm, you'll need to budget about 1 hour to 1.5 hours for each farm.

You can see more farms if you stick to a region of the tour . . . You'll notice that the tour is divided into 3 regions—north, central, and south, with a corresponding map for each region. You may want to pick 3 to 4 favorites in each region and focus on a single region each day.

Many of the farms are on the tour each year, so you can see them in the future Each year the Farm Tour will feature new farms along with many favorites from previous years.

Use Your Head and USE-YER-FOOT!

At farms featuring livestock this year, you will see a handy device: the USE-YER-FOOT handwashing station, created by Turtle Run Farm. This handy device was created to make handwashing easier when conventional plumbing is not available or convenient. To assure that your experience on the Farm Tour is positive and healthy, we have provided a USE-YER-FOOT at the farms that feature opportunities to interact with animals.

Raised on pasture with access to fresh air and plenty of exercise, the animals on our Farm Tour are far less likely to carry dangerous strains of e.coli than those animals found at petting zoos. Nevertheless, we encourage you to take precautions and use common sense when interacting with animals of all kinds. PLEASE TAKE TIME TO WASH YOUR HANDS AND MAKE SURE THAT CHILDREN WASH THEIR HANDS AFTER PETTING AN ANIMAL. YOU WILL ALSO BE ASKED TO DISINFECT YOUR SHOES AT FARMS WITH LIVESTOCK TO PREVENT THE FARM-TO-FARM TRANSMISSION OF GERMS THAT MIGHT STICK TO YOUR SHOES. Thank you for cooperating in the farms' efforts to protect you and their animals.

Use your head, and use-yer-foot!

Interested in a use-yer-foot for an event?
Check out www.useyerfoot.com



Weaver Street Market is proud to support local family farms

For 20 years, Weaver Street Market has been a key supporter of local family farms. As a local, community-owned business ourselves: we've fostered a close, personal relationship with many of the farmers on this farm tour - that means that you'll find the freshest, seasonal produce and a wide variety of other local products when you visit our stores in Carrboro, Southern Village and Hillsborough.

Our continual priority is to cultivate relationships with growers who are committed to sustainable farming methods. That means that the majority of the produce you'll find in our stores tastes pure and delicious because it is grown naturally — without artificial pesticides or fertilizers.

The benefits of buying locally are staggering, ranging from economic to environmental to personal. Food that is consumed in the region in which it is grown burns fewer fossil fuels than food produced across the country or around the world. Food purchased from nearby farms contributes to the local economy, keeping dollars in circulation close to home. And locally grown food is fresher, more nutritious, and better tasting.

Working together, consumers and farmers have enormous power to shape our food system. Each purchase of locally grown food contributes directly to the health of our local farms, enabling them to enrich our community in so many ways.

Thank you for your support of local farmers!



13TH ANNUAL
**PIEDMONT
 Farm
 TOUR**

NORTH

Co-Sponsored By:



LEGEND



Child Appeal



Restroom



**Lunch or
 Snacks Offered**

FIND THE FARM

A green tomato with a number identifies each farm on the map.

**1 Baldwin Family Farms
 Mac & Peggy Baldwin**



5341 Hwy 86, Yancyville - on Hwy 86 approximately 12 miles north of intersection of Rt. 49 & Hwy 86
 Our farm is a three generation (800 acres) family beef farm. We birth and produce about 350 Charolais calves each year. About one half of these are grown out on grass as all-natural grass-fed lean steers direct-marketed under our "Baldwin Charolais Beef" label. An On-Farm Beef Outlet will be open on tour days offering our grass-fed beef. About 150 newborn calves should be available for you to see on pastures. Pasture tours will be conducted from two covered wagons pulled by tractors. www.baldwinbeef.com (336) 694-4218
www.baldwingrassfedbeef.com

2 Flat River Nursery & Farm



Joan & Charles Holeman
1548 Holeman Ashley Rd., Timberlake
1.5 miles from Guess Rd. (157) & Berry Rd.

A family farm since the 1700s, we strive to produce the highest quality produce, plants, etc, and improve the farm at the same time. See greenhouse tomatoes, cukes, bedding plants, hanging baskets, herbs, beneficial insects, and bumble bee pollination. Pick-your-own strawberries if weather permits! (336) 364-2460

30th Season



**CARRBORO
 Farmers' Market**

on the Town Commons
Saturday • Year Round

Winter 9 to Noon Spring thru Fall 7 to Noon

Wednesday Apr 9–Oct 15 3:30-6:30

On the Village Green in Southern Village
Thursday May–Aug 4:00-7:00

www.carrborofarmersmarket.com

FARM TOUR NORTH

**3 Pine Knot Farm
 Stanley Hughes**



8906 Hester Road, Hurdle Mills - 1 mile from the intersection of Walnut Grove Church Rd. & Ormond Rd.
 A third generation minority farmer raising certified organic sweet potatoes, soybeans, collards, cabbage, kale, turnip greens and 20 acres of organic tobacco. This year you'll also see pastured poultry and grass-fed steer. Stanley sells his tobacco to the Santa Fe Natural Tobacco Company and markets his produce at the Carrboro and Durham Farmers' Markets and through Eastern Carolina Organics (ECO). (919) 644-3276

Whitted Bowers Farm *new!*

4 Cheri & Rob Bowers
8707 Art Rd., Cedar Grove
- .25 miles from intersection of Art Rd. and Hurdle Mills Rd.



Whitted Bowers Farm is a 52 acre biodynamic farm in its second year of operation. We specialize in fruit. This year we are in full production with strawberries and heirloom melons. We also have table grapes, blackberries and blueberries.

Maple Spring Gardens

Ken Dawson & Libby Outlaw

5 9812 Allison Rd, Cedar Grove - 12 miles from intersection of Hwy 86 & Hwy 70

In business since 1984, Maple Spring Gardens produces over 100 varieties of vegetables, herbs, berries, and cut flowers on what was once a worn out tobacco farm. Greenhouse and field production. Produce is sold at the Carrboro and Durham Farmers' Markets and through our CSA. www.maplespringgardens.com

Everybody Loves Local Produce



Reservations 929-ACME ★ Downtown Carrboro



13TH ANNUAL
PIEDMONT
**Farm
TOUR**

NORTH

Co-Sponsored By:



LEGEND



Child Appeal



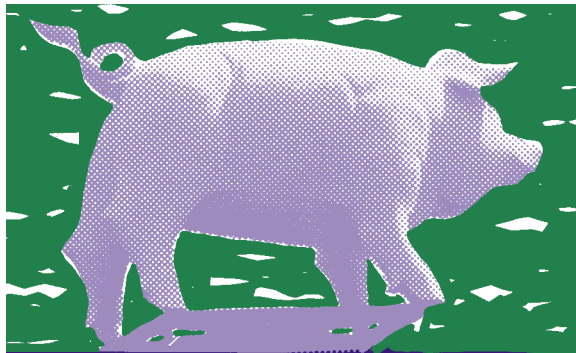
Restroom



Lunch or
Snacks Offered

Special Thanks to the following
for distributing Farm Tour Maps:

Acme	Crook's Corner
Panzanella	Elaine's
La Residence	411 West
Lantern	T. S. Designs
Carrboro Farmers' Market	Pop's Restaurant
Pittsboro Memorial Library	Lucky 32: Cary
Margaret's Cantina	Whole Foods: Cary
Weaver Street Realty	Whole Foods: Raleigh
Whole Foods: Chapel Hill	Zely & Ritz
Whole Foods: Durham	Eno Teca Vin
Orange Cty. Visitor's Bureau	



Crook's Corner

Casual Fine Southern Dining
Reservations Accepted • Walk-ins Welcome

Dine In or Take Out 919-929-7643

Open for dinner Tues-Sun at 5:30 pm • Sun Brunch 10:30 am-2:00 pm
610 West Franklin St, Chapel Hill • www.crookscorner.com

**Niche
Gardens**

1111 Dawson Road
Off Old Greensboro Hwy
919-967-0078

GROW WILD WITH NATIVES!
promoting sustainable
gardening since 1986

www.NicheGardens.com

Wild Hare Farm



Leah Cook & Mark Thomas
9836 Allison Rd. - 12 miles north from
intersection of Hwy 86 & Hwy 70

We raise a variety of cut flowers, vegetables, and strawberries. These products are sold at the Carrboro Farmers' Market, to local restaurants and florists. Come see what flowers are blooming in our hoop houses! (919) 452-8987
www.wildharefarm.us



Captain J. S. Pope Farm

Robert & Tommy Pope

6909 Efland-Cedar Grove Rd., Cedar Grove -
located at the intersection of Allison Rd. & Efland-
Cedar Grove Rd. just north of McDade Store Rd.

Walking tour visitors will see over 250 Dorper sheep and lambs, Jeff (our large Akbash/Maremma dog), and two llamas. Lamb, lamb chili, and homemade barbecue sauce will be available for purchase. A gourmet dinner will be served in the 140 year old farmhouse on Saturday evening. Call (919) 621-1150 for reservations.

www.dorpercedargrovec.com



Infinity Biodynamic Farm

Joy & Bob Kwapien

1600 McDade Store Rd., Cedar Grove - 2 miles
from intersection of Hwy 86 & McDade Store Rd.,
1/4 mile west of Oakley Rd.

Come see one of the region's only biodynamic farms located on 161 acres of rolling pastures, hardwood forest and ponds. In addition to organic practices such as crop rotation and composting, biodynamics uses special plant, animal and mineral preparations and the rhythmic influences of the sun, moon, planets and stars to create a thriving agrarian ecosystem. We raise biodynamic vegetables, herbs, grass-fed cattle, and free range chickens.
www.infinitybiodynamicfarm.org (919) 732-1840

RESTAURANT & BAR

Lantern

423 W FRANKLIN ST - CHAPEL HILL NC
919-969-8846 www.lanternrestaurant.com

FARM TOUR NORTH

Anathoth Community Garden 

9 Fred Bahnson, Garden Manager
Corner of Lonesome Road and Mill Creek Road, Cedar Grove

Anathoth Community Garden, a ministry of Cedar Grove UMC, is a five acre rural garden that welcomes people of diverse backgrounds to grow food, eat together, and build community. We are also a host site for teen community service volunteers. www.anathothgarden.org
 (919) 357-8107

10 Iron Gate Winery 

Debbie & Gene Stikeleather
2540 Lynch Store Road, Mebane - located near intersection of Hwy 119 North & Lynch Store Rd.

Visitors will see how an old tobacco farm has been turned into 8 acres of vineyards. There is a two acre pond that guests of the winery can fish in. We have underground water storage from a nearby spring that we use for irrigation. Our farm animals include fainting goats, Belgian Draft horses and Haflinger Quarter horses. Enjoy a tour of the winery and winemaking process. (919) 304-9463
www.irongatevineyards.com

11 McAdams Farm 

Howard McAdams Family -
1100 Efland-Cedar Grove Rd. - 1 mile north of Hwy 70 on Efland-Cedar Grove Rd.

In its fifth generation in Orange County, McAdams Farm continues to grow as a diversified farm. The farm is run by three generations of McAdams, growing a wide variety of vegetables, cut flowers, pick-your-own strawberries and beef cattle. Marketing is done through an on-farm stand as well as the Carrboro and Southern Village Farmers' Markets. Visitors will see cows, near-ripe strawberries, newly planted vegetables and early flowers. Homegrown natural Angus beef will be available for sale. (919) 732-7701 or 732-5552

12 Coon Rock Farm 

Richard Holcomb
1021 Dimmocks Mill Rd., Hillsborough - 3 miles from the center of Hillsborough, 3 miles north of where I-40 & I-85 merge

A sustainable family farm on 55 acres along the Eno River producing organically grown heirloom vegetables and antibiotic and hormone-free chicken, eggs, lamb and goat. We also sustainably harvest and sell firewood, and custom saw and sell our own lumber. www.coonrockfarm.com
 (919) 732-4168

Four Leaf Farm

new!

13 Tim & Helga MacAller
6815 Bill Poole Rd, Rougemont - 0.1 mile from intersection of New Sharon Church Rd. and Bill Poole Rd.

Four Leaf Farm has 1/4 acre of intensively planted permanent raised beds, two greenhouses, active composting, perennial gardens, plant nursery, a small laying flock, shiitake mushroom logs and a kiwi vine.

Farm Tour Rules: PLEASE DO NOT:

- Visit Farms During Non-Tour Times!
- Enter Private Homes!
- Bring Your Pets To The Farms!
- Visit Farms After 6 pm!

you'll find
 fresh-picked
 local, seasonal
 favorites here
 - everyday -

www.weaverstreetmarket.coop

929-0010 101 E. Weaver St. Carrboro OPEN 7 DAYS 8 am - 9 pm	WEAVER STREET MARKET	929-2009 Southern Village Chapel Hill OPEN 7 DAYS 7 am - 9 pm
---	-------------------------------------	---

**Margaret's
CANTINA**

Fresh, Healthy
 Southwestern Cuisine

Timberlyne Shopping Center
 1129 Weaver Dairy Rd, Chapel Hill
 919-942-4745
www.margaretscantina.com

Serving lunch weekdays
 and dinner Monday - Saturday



13TH ANNUAL
 PIEDMONT

**Farm
 TOUR**

NORTH

Co-Sponsored By:



LEGEND



Child Appeal



Restroom



**Lunch or
 Snacks Offered**

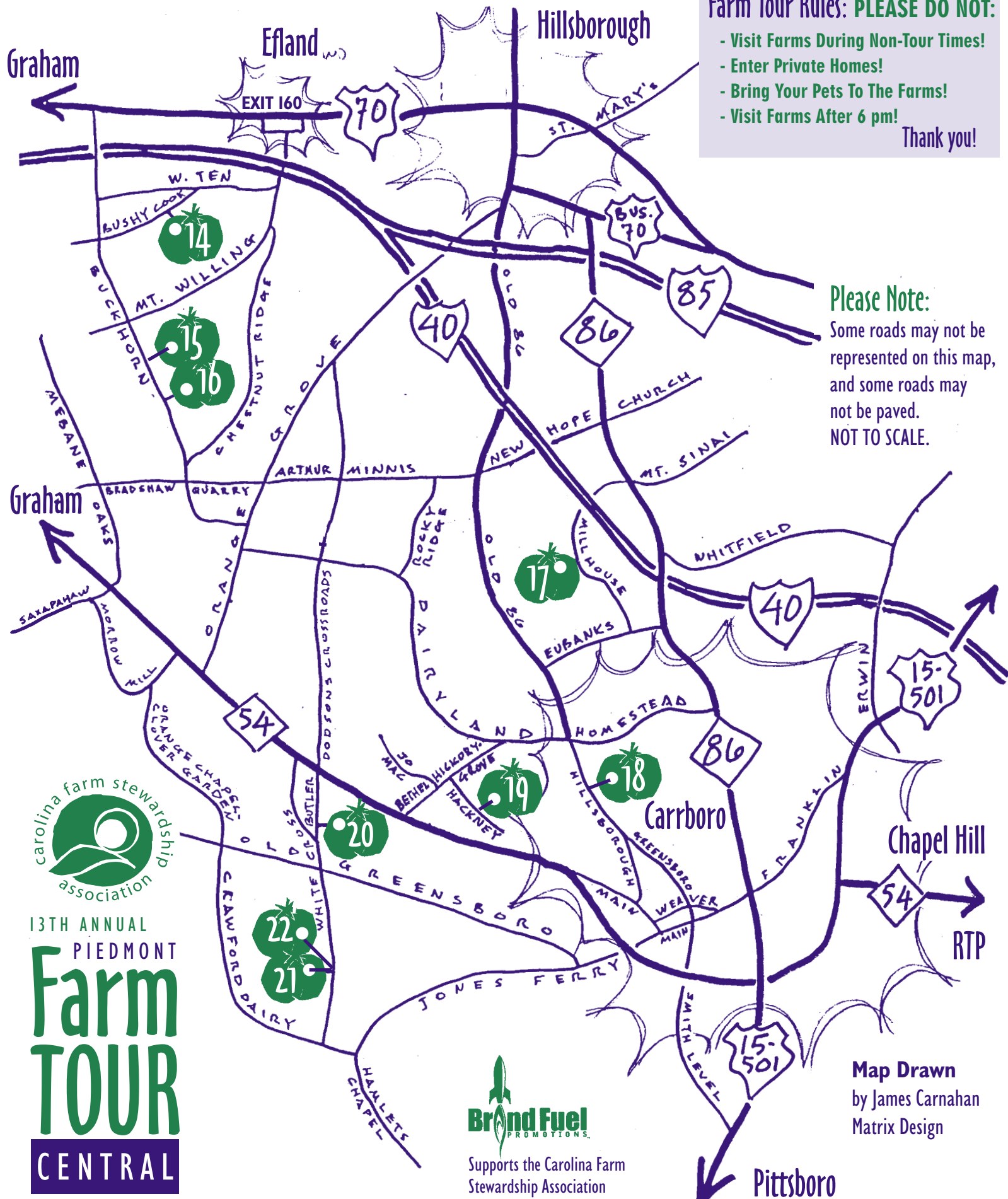
Farm Tour Rules: PLEASE DO NOT:

- Visit Farms During Non-Tour Times!
- Enter Private Homes!
- Bring Your Pets To The Farms!
- Visit Farms After 6 pm!

Thank you!

Please Note:

Some roads may not be represented on this map, and some roads may not be paved. NOT TO SCALE.



13TH ANNUAL
 PIEDMONT
**Farm
 TOUR**
 CENTRAL



Supports the Carolina Farm Stewardship Association

Map Drawn by James Carnahan Matrix Design

FARM TOUR CENTRAL


14 **Timberwood Organics** 
Ray & Maria Christopher
 4619 Timberwood Trail - exit 160 off I-85/40, turn left, go under interstate, up the hill, turn right at stop sign. 1.5 miles turn left, 0.7 mile turn left
 Certified organic family-owned farm producing quality produce and herbs since 1989 for sale at the Carrboro Farmers' Market, CSA, restaurants and stores. Delicious homemade breads, snacks and produce will be available for sale.
 www.timberwoodorganics.com (919) 563-9464

15 **Dancing Pines Farm**
Bill & Joanna Lelekacs
 3606 Buckhorn Rd - 1.5 miles south of Mt. Willing Rd. on Buckhorn Rd.; 1 mile north of Fickle Creek Farm
 Come see the new changes on our small-scale produce farm. We have increased our growing area, added a second irrigation pond, and are currently constructing a 22' x 96' unheated greenhouse. We hope to have some spring vegetables and bedding plants for sale. (919) 563-3430

16 **Fickle Creek Farm** 
Ben Bergmann & Noah Ranells
 4122 Buckhorn Road - 0.6 mile north of the intersection of Buckhorn Rd. and Chestnut Ridge Rd.
 See it all at Fickle Creek Farm: 700-plus pastured laying hens, 30-doe meat goat herd and their kids, 50-ewe sheep flock and their lambs, plus steers and pigs. Four Great Pyrenees livestock guard dogs keep everyone safe. We'll have "Pick-your-own eggs" again this year! Passive solar farmhouse also serves as a Bed and Breakfast. We're young and growing. (919) 304-6287 (30-GOATS)

17 **Spence's Educational Farm** 
Spence Dickinson
 6407 Mill House Road - 1 mile from junction of Mill House Rd. & Eubanks Rd., exit 266 off I-40
 A new model for farms where the farm supports families' and children's needs. The main product of our farm is educating children to learn responsibility and partner with others and with nature. www.spencesfarm.com (919) 968-8581

new!
18 **Hogan's Magnolia View Farm** 
Rich Hogan & Ann Leonard
 9118 Old NC 86 - .25 mile south on Old NC 86 from Calvander intersection (Dairyland Rd., Homestead Rd. & Old NC 86)
 Tour and examine no-till farming equipment, plus other farm equipment, and visit our On-Farm Store to purchase our grass-fed beef. Visit Rameses, the famous UNC Mascot. Learn about our 251 years as a continuous family farm. www.hogansbeef.com

19 **Chapel Hill Creamery** 
Portia McKnight & Flo Hawley
 615 Chapel Hill Creamery Rd. - .06 mile from Dairyland to Hackney Rd., 1.3 miles from Hwy 54 to Hackney Rd.
 We believe that good cheese must come from good milk. Really good milk comes from really healthy, happy cows. Our Jersey cows spend their time out on the pastures in a low stress, comfortable environment. Take a hayride down the farm lane to visit the milking herd, heifers, and calves. Sample our farmhouse cheeses, and don't forget to bring your cooler!



13TH ANNUAL
 PIEDMONT

**Farm
 TOUR**

CENTRAL

Co-Sponsored By:



LEGEND

-  **Child Appeal**
-  **Restroom**
-  **Lunch or Snacks Offered**

FEARRINGTON FARMERS' MARKET



Growers-Only Market
 Tuesdays - 4 pm until ...
 April - Thanksgiving Rain or Shine
 at the Village of Ferrington



Squid's Restaurant & Oyster Bar
411 five eighth street ITALIAN CAFE
518 ITALIAN CAFE
SPANKY'S RESTAURANT & BAR
chapel hill restaurant group
MEZ CONTEMPORARY MEXICAN
 chapelhillrestaurantgroup.com
WINNER 2007 Sustainable Business of the Year
 -Foundation for a Sustainable Community
 "These Guys are the Rock Stars of Recycling in Orange County"
 -Blair Pollock, Solid Waste Planner-Orange County



13TH ANNUAL
PIEDMONT
Farm TOUR

CENTRAL

Co-Sponsored By:



LEGEND



Child Appeal



Restroom



Lunch or Snacks Offered

20 Eco Farm 

Cindy & John Soehner
2501 Butler Rd. - 0.9 of a mile south of Hwy 54 West

Come see our first generation family-run farm where we raise fields of greens, flowers, shiitake mushrooms, strawberries, and our new addition of pastured pork. Take a look at our passive solar greenhouse, the state's largest hackberry tree, our happy pigs, and Cindy's Greek vegetarian cookbook. www.ecofarm.com (919) 933-4663

Farm Tour Rules: PLEASE DO NOT:

- Visit Farms During Non-Tour Times!
- Enter Private Homes!
- Bring Your Pets To The Farms!
- Visit Farms After 6 pm!

Thank you!

Doing business in an Earth-friendly, community-supportive way for over 25 years

• SINCE 1982 •

Weaver Street REALTY

WeaverStreetRealty.com

RENEW SUSTAIN TAKE ROOT

Chatham Marketplace

Your Local Co-op Grocery


Cafe & Full Service Grocery offering Local Produce, Meats, Herbals, Body Care & more

919-542-2643

480 Hillsboro Street Downtown
Pittsboro in historic Chatham Mills

PRESENT YOUR FARM TOUR BUTTON & RECEIVE 5% OFF THRU MAY 15, 2008

www.chathammarketplace.coop

21 Perry-winkle Farm 

Cathy Jones & Mike Perry
1061 White Cross Rd.- 1 mile north of Crawford Dairy Rd., 2.5 miles south of Old Greensboro Hwy

Two "Eggmobiles" and our new "Egg McMansion" travel among fields of sustainably-grown vegetables and cut flowers. Chickens clean out gardens, eat bugs, and leave behind fertilizer. The passive solar greenhouse built with Hebel Block and a wood-fired brick bread oven are the "must sees."

new!

22 Duck Run Farm 

Keenan McDonald & Jackie Cope
1061 White Cross Rd.- 1 mile north of Crawford Dairy Rd., 2.5 miles south of Old Greensboro Hwy

Duck Run Farm is brand new! We're happily collaborating with Perry-winkle Farm to bring more animals into the mix, with a focus on poultry and a variety of eggs. Come meet our highly endearing Indian Runner Ducks, and if we're lucky, we'll have ducklings and baby chicks!

www.duckrunfarm.com

FARM TOUR SOUTH

23 Turtle Run 

Kevin, Kim, Erin & Clare Meehan
5776 Rumley Rd.-1/3 mile N of Hwy 87 & Rumley Rd.

Climb aboard the *Mulch Mobile* as it tours our small organic family farm in historic Saxapahaw. On the tour you'll learn how we created our yummy tomato we call "Little Cherokee." Our wiggling worms are always a kid favorite.

(336) 376-3313 www.useyerfoot.com

WHEN THE ORDINARY WON'T DO

LUCKY 32

The highest quality food and drink at a good value. Friendly attentive service. Monthly featured menus. "GET LUCKY & GO" take out/curb service. Learn what it means to Be Happy, Go Lucky.™

CARY 7307 TRYON RD. 233-1632 lucky32.com

FARM TOUR SOUTH

new!



24 Braeburn Farm/Cane Creek Farm
Charles, Cindy & Eliza Sydnor

Eliza MacLean 6707 Bass Mountain Rd.
- 5.5 miles south on Bass Mtn. Rd. from Hwy 87; 2 miles north on Bass Mtn Rd. from Old Greensboro Hwy
Braeburn Farm and Cane Creek have joined forces. Situated next door to each other, these two farms share facilities and are now the common site for all Cane Creek's chickens, turkeys, ducks, donkeys, goats, sheep, and of course 100s of funny pigs and Braeburn's grass-fed New Zealand Red Devon cattle. Come see the Ossabaw, Old Spot, Clinton and family and learn about the intense multi-species rotational grazing that yields rich fertilizer for tomatoes and watermelons galore. www.braeburnfarms.com (336) 376-3050

25 Millarckee Farm
Daniel Tolfree

6833 Bethel South Fork Rd. -4.5 miles west from Eli Whitney on Old Greensboro Hwy, 3.5 miles east from Snow Camp on Old Greensboro Hwy
Located on beautiful Cane Creek, Millarckee Farm has been growing veggies organically for 25+ years. Playing with an efficient bed/path/crop rotational system has allowed us to greatly reduce outside inputs like manure, minerals and gas, while increasing soil structure and nutrient availability. This will work in **your** yard without big equipment!

26 Benjamin Vineyards & Winery
Nancy Zeman

6516 Whitney Road - 1.25 miles from intersection of Old Greensboro Hwy & Whitney Rd.
They said you couldn't grow organic white grapes in the Carolinas, but we wouldn't listen. Come see how we're using sustainable practices and unique trellising to grow high quality Muscadine grapes, as well as French and French-American hybrids. The wines we produce range from dry table wines to sweet country favorites. Enjoy a tour of the process, from growing to bottling, and wine tastings are free! We'll have wines, jellies, and grape vines for sale. Great picnic site!
www.benjaminvineyards.com (336) 376-1080

27 Peregrine Farm
Alex & Betsy Hitt

9418 Perry Rd. - 1.5 miles from McBane Mill Rd., .75 mile from Mandale
Food with a Face, a Place and a Taste has been the mantra here at Peregrine Farm for 26 years. Come join us as we celebrate spring and see the wide array of cut flowers, vegetables and sustainable production techniques.

new!

28 Lindale Organic Dairy
Neill & Cori Lindley



1156 Moon Lindley Road, Snow Camp - 3 miles from the Silk Hope-Liberty-Gum Springs Intersection
We are a fourth generation dairy/poultry farm located in Chatham County. We currently milk 100 organic dairy cows and sell our milk to Organic Valley (a farmer-owned co-op). We are the first organic dairy in Chatham County. We plan to be a totally self sustainable farm by 2009. At that time, all of our farmable land will be organic. We are a vocal advocate for organics—Healthy soil first and foremost-Healthy crops-Happy Cows. Visitors will be able to see the milking facility, milk tank storage, dairy cows and calves, and a 200 acre pesticide free, family owned farm.

YOUR ORGANIC GARDENING & FARMING HEADQUARTERS

Carrboro: 106 S. Greensboro St. 919.932.7600
Greensboro: 1616 Battleground Ave. 336.271.3373
Raleigh: 5619 Hillsborough St. 919.852.4747
www.fifthseasongardening.com

Thank You
Weaver Street Market
for
20 Years of Supporting
Local Farmers!

Alex & Betsy Hitt
Peregrine Farm



13TH ANNUAL
PIEDMONT

Farm TOUR

NORTH

Co-Sponsored By:



LEGEND



Child Appeal



Restroom



Lunch or Snacks Offered



13TH ANNUAL
PIEDMONT
Farm TOUR

SOUTH

Co-Sponsored By:



LEGEND



Child Appeal



Restroom



Lunch or Snacks Offered

29 **Celebrity Dairy**
Fleming & Brit Pfann

198 Celebrity Dairy Way - 2 miles north from Hwy 64 on Mt. Vernon-Hickory Mtn. Rd., 1.5 miles south of Silk Hope
Here 80 celebrity goats produce the milk that Fleming transforms into award-winning farmstead goat cheese at the low impact, sustainable agriculture dairy. Our goat kids will play with your 2-legged ones! Plan a picnic, or purchase a lunch in our B&B Inn. Lunch, drinks, cheese, snacks for sale. www.celebritydairy.com (919) 742-5176

30 **Horizon Cellars**
Guy Loeffler

466 Vineyard Ridge, Siler City - from intersection of Hwy 64 & 421, go 2 miles south to exit 168, from there follow winery signs to the vineyard
A full-time commercial winery and vineyard in Chatham County growing grapes and producing award-winning wines. Just like wine, vineyards take time, patience and a lot of hard work. We are challenged each year to manage a responsible and sustainable vineyard, producing quality fruit under not-so-ideal eastcoast conditions. We are also working with other regional growers, suggesting responsible and sustainable guidelines and requirements. www.HorizonCellars.com (919) 742-1404

31 **Ayrshire Farm**
Bill Dow

602 Friendly Pooch Lane - from US 64, go south on Hadley Mill Rd. 1 mile, then right on Jay Shambley Rd.; Friendly Pooch Lane .5 mile on left
See our diversified production of vegetables, fruits, herbs, flowers and firewood using organic practices. Since 1981 we've been marketing at the Carrboro Farmers' Market and several years later began to sell to local restaurants. We have pick-your-own blueberries in the summer, but right now you'll see lettuce, greens, fennel, and radicchio reaching maturity. We'll also be planting tomatoes and peppers. Ask about our CSA. (919) 542-5528

32 **Harland's Creek Farm**
Judy Lessler

97 Plantation Drive, Pittsboro - 4 miles west of Pittsboro at mile marker 378 off Hwy 64, then 1/3 mile down Manco Dairy to Plantation Drive
Certified Organic. We grow a large variety of vegetables, herbs, and flowers. We sell at the Durham Farmers' Market, through several CSAs, and subscription floral bouquets. This year we installed our own green house and small hoop house and are beginning our pastured poultry operation. Spring vegetables will be growing, flowers in bloom and summer crops planted. Our "parterre," a geometric garden, should be in bloom with heirloom bulbs. (919) 542-4607 www.harlands-creek-farm.com



Farm Tour Rules: PLEASE DO NOT:

- Visit Farms During Non-Tour Times!
- Enter Private Homes!
- Bring Your Pets To The Farms!
- Visit Farms After 6 pm!

Thank you!

**Picnic at
Celebrity Dairy**

Lunch, Snacks, Drinks for Sale
During the Farm Tour

Consider our B&B Inn for:

- Weddings
- Business Retreats
- Dining & Overnites

Call (919) 742-5176 or
visit www.celebritydairy.com

Chapel Hill



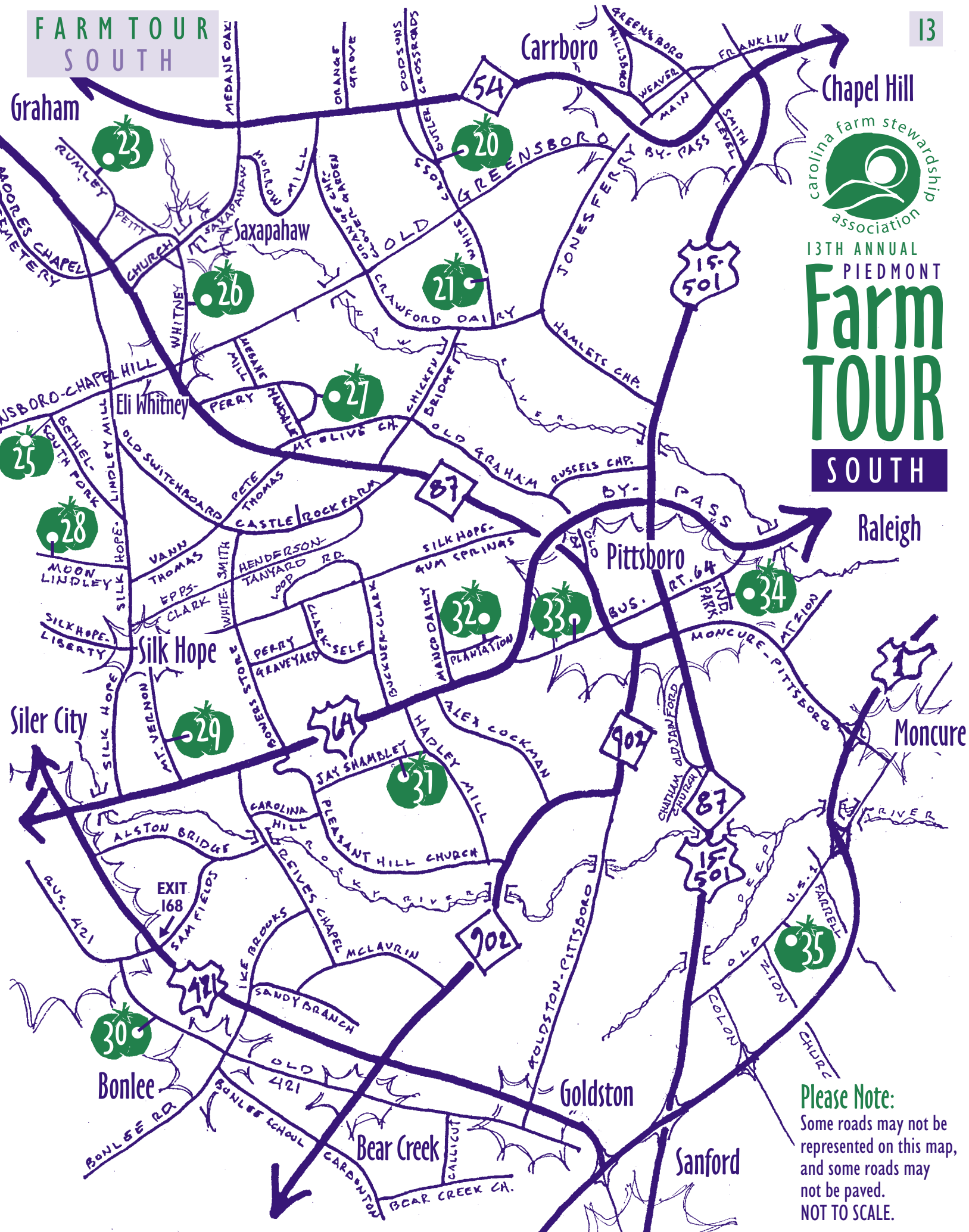
13TH ANNUAL
PIEDMONT

Farm TOUR

SOUTH

Raleigh

Moncure



Please Note:
Some roads may not be represented on this map, and some roads may not be paved.
NOT TO SCALE.



13TH ANNUAL
PIEDMONT

Farm TOUR

SOUTH

Co-Sponsored By:



LEGEND



Child Appeal



Restroom



Lunch or
Snacks Offered

33 Sustainable Farming Program Central Carolina Community College

Hwy 64 Business West out of Pittsboro

Visit the home of North Carolina's premier two-year degree program in Sustainable Agriculture. The on-campus, student farm uses organic methods for year-round production on 1.5 acres of cultivated land. In addition to a variety of spring vegetables in various stages of growth, visitors can see our season extension methods, day range poultry operation with laying hens and our beautiful perennial herb garden featuring medicinal and culinary herbs. Visitors will have the opportunity to purchase "student-grown" spring crops at our on-site market stand. In addition, Sofia's Farm will be at CCC with a variety of kid-friendly and educational livestock exhibits. Angora bunnies and a daily shearing demonstration as well as an opportunity to purchase a variety of local meats will round out the local food/farm connection for visitors. www.cccc.edu (919) 542-6495 ext 229



Silk Hope, NC



April 17-20

Bring a Farm Tour button and get up to: two day tickets at 1/2 price
Info: www.shakorihills.org

34 The Plant Rachel Burton

192 Lorax Lane, Pittsboro. - 1 mile from Bus-64 and Industrial Park Drive

Come visit The Plant, home of Piedmont Biofarm, where you'll see a year-round vegetable operation and a hands-on seed-saving demo by Doug Jones. Also tour the commercial biodiesel operation at Piedmont Biofuels, learn 'locavore' cooking tips from Eastern Carolina Organics, visit Screech Owl's hydroponic lettuce greenhouse, see a commercial-scale worm-composting system, glean energy-saving tips from the Abundance Foundation and more! www.biofuels.coop www.easterncarolinaorganics.com (919) 321-8260



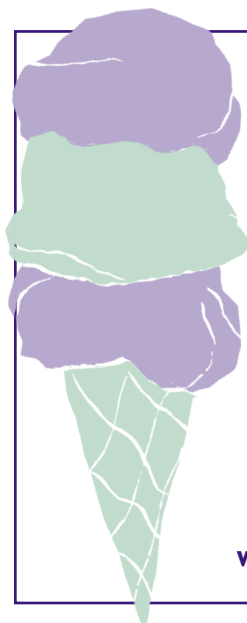
35 Dew Dance Farm Laura Young & George McRae

3400 Deep River Rd (Old US 1) - 4 miles from intersection of Pittsboro Moncure Rd. & Old US 1 (Deep River Rd.); 3.5 miles from intersection of 15-501 & Old US 1 (Deep River Rd.)

Dew Dance Farm is a 50-year-old family farm home to a menagerie of fiber animals: llamas, angora goats and rabbits, and rare breeds of sheep, as well as poultry. There is also an organic garden of vegetables and berries. Fiber and fiber products including blankets, pillows, yarn, comforters, clothing, ornaments and balls will be on display and for sale. You will see demonstrations of a working loom and can sign up for classes. If we're lucky, we will have chicks and bunnies. Our outbuildings are from timber milled on the property. Lots of animals to see! (919) 775-5140



**BUY A COMMEMORATIVE
Farm Tour T-Shirt!
100% ORGANIC COTTON!**
- AVAILABLE AT WEAVER STREET MARKET, CHATHAM MARKETPLACE-



Maple View Carrboro!

Maple View Ice Cream is open in Downtown Carrboro across from Weaver Street Market.

... featuring all your favorite flavors of ice cream ...

www.mapleviewfarm.com

SUPPORT LOCAL FARMS

Animal Welfare



animalwelfareapproved.org

The Animal Welfare Approved program and food label promote the well-being of animals and help sustain family farms.

Visit with
Animal Welfare Approved
Pigs at
Cane Creek Farm



A PROGRAM OF THE ANIMAL WELFARE INSTITUTE



Saving
the places
you love for
25 years

Triangle Land Conservancy is celebrating 25 years of conserving farms, forests, streams and natural areas to keep water and air clean in the Triangle.

Join us in creating a green legacy for the future of our communities

TriangleLand.org

BICYCLISTS!

New, experienced and tandem cyclists are invited to ride the Piedmont Farm Tour!

Along the ride pick your own strawberries, pet livestock, or dine on dairy-fresh ice cream.

Friends pedaling together in a **group of two or twenty** constitute **'one car.'** Pay either a \$10 fee per farm or purchase together a \$30 button and gain entrance to all farms

16th
Chatham Studio Tour



Edwin White 1st



Mark Hewitt 2nd



Shannon Bueker 3rd



William Moore 4th

12/6 & 7, 13 & 14/08
reception 12/5, 7pm

Take the Tour!
Chatham Artists Guild

ChathamArtistsGuild.org
336.581.3763
artstour@blast.com

Our Local Mission at Whole Foods Market

We are committed to buying from local growers, harvesters and producers. We currently work with over 250 farmers and producers in the South. We favor growers and producers who farm organically and are dedicated to environmentally friendly, sustainable agriculture. We actively seek out individual growers in our communities and encourage our department Team Leaders at each store to buy local items directly. We partner with groups that support sustainable agriculture efforts. We offer financial support in the form of low-interest loans to our partner growers and producers who wish to expand and improve. WE SUPPORT LOCAL.



CHAPEL HILL
81 S. Elliott Road • Village Plaza
919.968.1983
www.wholefoodsmarket.com

Looking for a better relationship with your food?

Visit CFSA at www.carolinafarmstewards.org and search for your food from your farmers. You'll find the most complete guide available to sustainable farms in the Carolinas and the businesses that support them:

- Sustainable Farms
- Restaurants
- Groceries ... and more.

www.carolinafarmstewards.org is your one-stop resource for connecting with your food community. Come join us and support farmers, your health, and our environment.





13TH ANNUAL
PIEDMONT

Farm TOUR

APRIL
19 & 20

1 - 6 pm

Co-Sponsored By:



FARM TOUR KICK-Off!

Thursday, April 17 6 - 8 pm

on the lawn at Weaver Street Market in Carrboro

Live Music , Wine Tasting
MEET FARMERS ON THE TOUR & LOCAL PRODUCERS!

Enjoy an evening of live music while sampling wines from local vineyards on the tour with friends, neighbors, and our community of small farmers and producers.

You'll meet folks from the Carolina Farm Stewardship Association and the Sustainable Farming Program in Pittsboro.

Advance button sales to tour all farms will be available this evening for \$25.
PURCHASE A COMMEMORATIVE FARM TOUR T-SHIRT - 100% ORGANIC COTTON
For more information call 929-0010 ext 115 or 542-2402

new! THE PIEDMONT FARM wine tour!

Three of the area's most exciting wineries are on the Farm Tour this year, Iron Gate Winery (#10), Benjamin Vineyards (#26) and Horizon Cellars (#30). And all three are offering free wine tastings to Farm Tour Button purchasers on April 19 and 20. So come on out and celebrate some of North Carolina's award-winningest wines and support your local wineries.

CEFS



NCSU | NCA&TSU | NCDA&CS

Seasons of Sustainable Agriculture Workshop Series

Featuring 36 workshops around NC

Events Run February to November

FOR MORE INFORMATION:
www.cefs.ncsu.edu
or (919) 513-0954

farm dinners

watch for our monthly FARM DINNERS COMING SOON

10% of restaurant sales benefit the CFSA & Sustainable Farming Program

... rabidly devoted to locally-produced, handcrafted, seasonal foods ...

... great bread

panzanella

OLD CARR MILL CARRBORO
929-6626